

HYANNIS YACHT CLUB
2024 ONE DESIGN SUMMER SERIES
Sailing Instructions

Hyannis Yacht Club is the organizing authority

1. RULES

1.1 The 2023 One Design Summer Series will be governed by the rules as defined in the Racing Rules of Sailing (**RRS**).

1.2 A boat may take a one turn penalty when she may have broken a rule of Part 2 while racing. This changes **RRS 44.1**.

1.3 Flag E with one sound signal before the warning means that J22s will not fly spinnakers in that race.

2. NOTICES TO COMPETITORS

Notices to competitors will be posted on the Official Notice Board and/or the Hyannis Yacht Club website.

3. CHANGES TO THE SAILING INSTRUCTIONS

Any change to the sailing instructions will be posted two hours before first scheduled warning of the day, except that any change to the schedule of races will be posted by 2000 on the day before it will take effect.

4. SIGNALS MADE ASHORE

4.1 Signals made ashore will be displayed on the HYC yardarm located on the dock/Middle T.

4.2 When flag AP is displayed ashore, "1" minute is replaced with not less than 30 minutes. Boats are requested not to leave the harbor until this signal is made.

5. SCHEDULE OF RACES

The schedule of races is defined in the Notice of Race.

6. CLASS FLAGS

Class flags will be used only for races conducted outside of Lewis Bay.

J22 Flag-"J"

ILCA 7 Flag (laser standard)-Pennant "1"

ILCA 6 Flag (laser radial)-Pennant "2"

7. VENUE

Racing areas are described in the Notice of Race.

8. COURSES

8.1 Appendix A shows the courses, including approximate angles between legs, the order in which marks are to be passed and the side each mark is to be left.

8.2 No later than the warning signal, the signal boat will display the course. "Approximate compass bearing and distance will be displayed for races run outside of Lewis Bay."

8.3 When more than one fleet races, a boat shall not cross the start line except to start or correct a starting error.

9. MARKS

Marks will be either inflatable pyramids, cylinders or spheres.

10. STARTS

10.1 Races in Lewis Bay will be started using Appendix U. Races outside Lewis Bay will be started using **RRS 26**.

10.2 The starting line will be between the staff displaying an orange flag on the signal boat and the starting mark.

10.3 Boats who are not in a starting sequence will avoid the starting area.

10.4 A boat starting more than three minutes after her starting signal will be scored **DNS** without a hearing.

10.5 The race committee will hail OCS boats on a best effort. Failure to hail will not be grounds for redress. This changes **RRS 62.1**.

11. CHANGE TO THE NEXT LEG OF THE COURSE

To change the next leg of the course the race committee will move the original mark or finish line to a new position.

12. THE FINISH

12.1 The finish line will be between a staff displaying a blue flag on the signal boat and a nearby mark. The finish line may be different from the starting line.

12.2 If a boat is delaying the completion of a race, the race committee may finish that boat in place and award points equal to last place in that race.

13. TIME LIMITS

13.1 Boats in the series racing failing to finish within one hour of the start or 20 minutes after the first boat sails the course and finishes will be scored DNF without a hearing.

This changes **RRS 35, A4 and A5**.

13.2 Boats racing in long distance races failing to finish within 2 hours of the start or 30 minutes after the first boat finishes will be scored DNF without a hearing. This changes **RRS 35, A4, A5**.

14. PROTESTS AND REQUESTS FOR REDRESS

14.1 A boat intending to protest another boat shall inform the race committee as soon as possible after finishing the race. Protests shall be delivered to the PRO.

14.2 The protest time is 60 minutes after the signal boat has docked.

15. SCORING

15.1 For monthly series, one completed race constitutes a series.

15.2 Rule A 5.3 will apply.

15.3 In each monthly series, a Thursday and Sunday series boat's worst score will be discarded after completing every five (5) races. If you sail 5 races you drop 1 race, if you sail 10 races you drop 2 races, etc.

16. EQUIPMENT AND MEASUREMENT CHECKS

16.1 A boat may be inspected at any time for compliance with class rules and sailing instructions.

16.2 J22's shall not use spinnakers in Lewis Bay for Thursday series.

17. SAFETY REGULATIONS

17.1 A boat that retires from a race shall inform the race committee.

17.2 Races may be canceled for some or all fleets if winds exceed 25 knots.

18. PRIZES

Prizes will be awarded according to the NOR.

19. RESPONSIBILITY AND LIABILITY

RRS 3 states, The responsibility for a boat's decision to race or continue to race is hers alone. Sailing is an activity that has an inherent risk of damage or injury. Competitors in these events participate entirely at their own risk. These risks include strong winds and rough seas, sudden changes in weather, failure of equipment, boat handling errors, poor seamanship by other boats, loss of balance on an unstable platform and fatigue resulting in increased risk of injury. Inherent in the sport of sailing is the risk of permanent, catastrophic injury or death by drowning, trauma, hypothermia or other causes.

20. CONTACT INFORMATION

For further information, please contact Hyannis Yacht Club Race Committee

Email: race@hyannisyachtclub.org

Mail: Hyannis Yacht Club Race Committee, 490 Ocean St. Hyannis, MA 02601

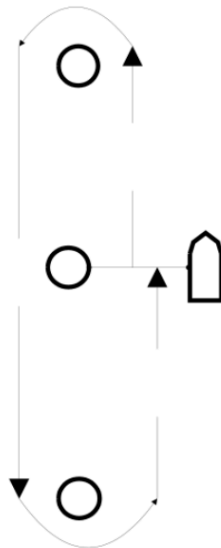
Appendix A - Courses

Course D

Windward -Leeward

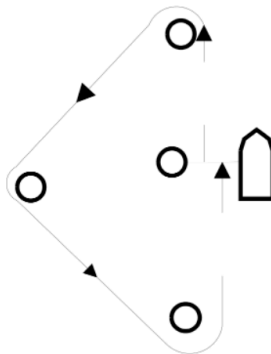
Start and Finish in the middle

*can include an offset mark and add additional legs (ex. D2)

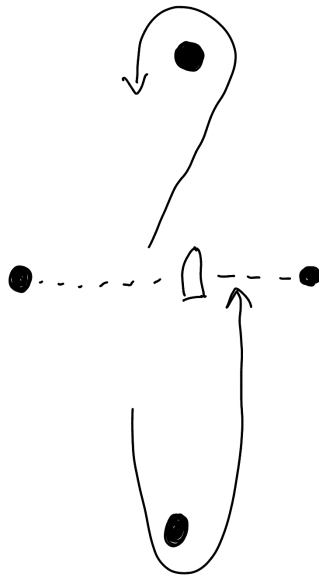


Course M

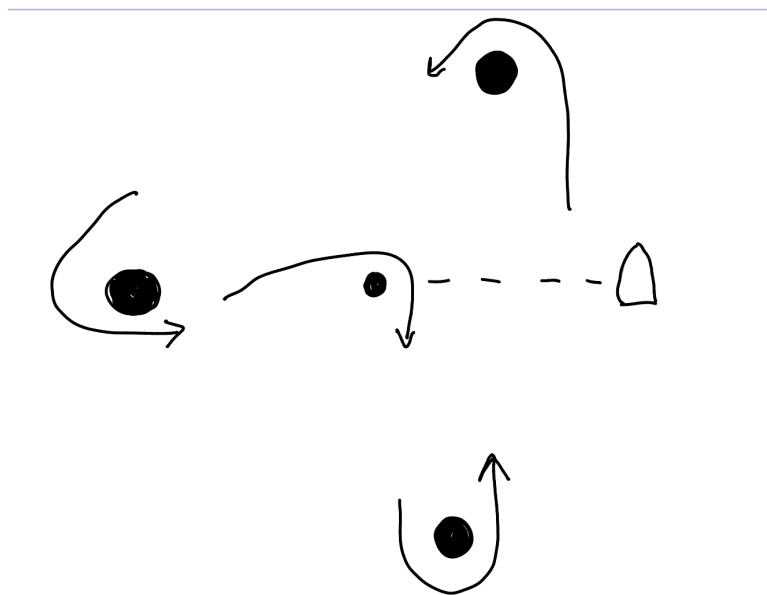
Triangle- start and finish in the middle



Course J
Windward - Leeward Start Port, Finish Starboard



Course HA - Harry Anderson
Windward (to port) - Wing (to port) - Pin (to starboard) Leeward (to port) - Finish



Gate and Offset Mark Options

Gate

